

# Global Leader Approval Rating Tracker

The latest approval ratings are based on data collected from July 4-10, 2025. Ratings reflect a trailing seven-day simple moving average of views among adults in each country surveyed.

By Jason McMann & Sonnet Frisbie

 Share

IN THIS TRACKER

▼

## Data Downloads

Pro+ subscribers are able to download the datasets that underpin Morning Consult Pro's reports and analysis. [Contact us](#) to get access.  
Chart Packs are available to Pro subscribers.

Trended Data File

PRO+

A trended, sortable XLSX data file covering historical monthly approval of featured political leaders among adults

XLSX • 55KB



Chart Pack

Production-ready trended charts of chief executive approval

PDF • 1 BYTES



## Trended Approval Ratings

A companion monthly chart pack showing trended approval ratings for all leaders featured in the tracker is available for Morning Consult Pro subscribers, and can be accessed via the Data Downloads section above, along with a companion trended data file.

For U.S. leader approval among registered voters, see here: [Tracking Public Opinion of Trump's Washington](#).

## Companion Research & Analysis

Email Briefing: Morning Consult Counter/Consensus is a biweekly, publicly available briefing that provides

### Jason McMann

Head of Political Intelligence

Jason I. McMann leads geopolitical risk analysis at Morning Consult. He leverages the company's high-frequency survey data to advise clients on how to integrate geopolitical risk into their decision-making. Jason previously served as head of analytics at GeoQuant (now part of Fitch Solutions). He holds a Ph.D. from Princeton University's Politics Department. Follow him on Twitter [@jimcmann](#). Interested in connecting with Jason to discuss his analysis or for a media engagement or speaking opportunity? Email [press@morningconsult.com](mailto:press@morningconsult.com).

### Sonnet Frisbie

Deputy Head of Political Intelligence

Sonnet Frisbie is the deputy head of political intelligence and leads Morning Consult's geopolitical risk offering for Europe, the Middle East and Africa. Prior to joining Morning Consult, Sonnet spent over a decade at the U.S. State Department specializing in issues at the intersection of economics, commerce and political risk in Iraq, Central Europe and sub-Saharan Africa. She holds an MPP from the University of Chicago.

Follow her on Twitter [@sonnetfrisbie](#). Interested in connecting with Sonnet to discuss her analysis or for a media engagement or speaking opportunity? Email [press@morningconsult.com](mailto:press@morningconsult.com).

## Subscribe: Our Best Intel

A concise and informative daily round-up of our latest data

[Subscribe](#) >

## Introducing: MorningConsult.AI

Our new AI tool uses 80 million survey interviews to instantly show how your brand stacks up—across audiences, competitors, markets, and media channels.

[Try it free](#)

## Keep reading

Geopolitical Risk in 2025: Mid-Year Update Report

Made in America Report, 2025 Edition

Global Policy Outlook Series: Societal Polarization & Nationalism, H1 2025

Is NATO Dead? Europeans Think So.

Global Political Polarization Rankings

Explore more

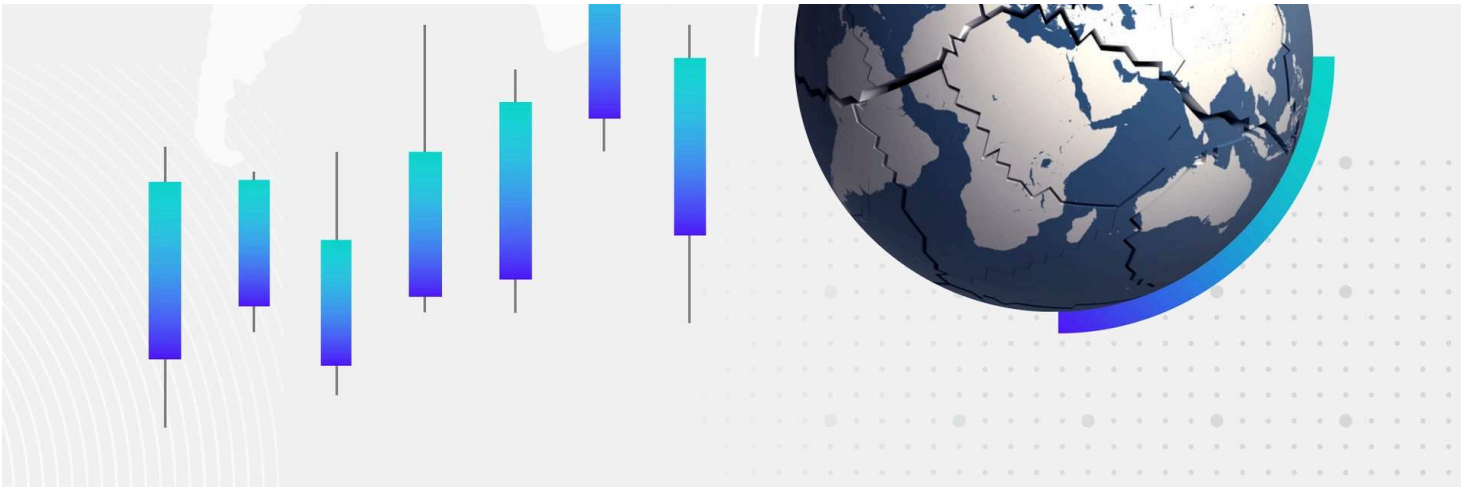


GLOBAL POLITICS

Soft Power Rankings

May 22, 2025

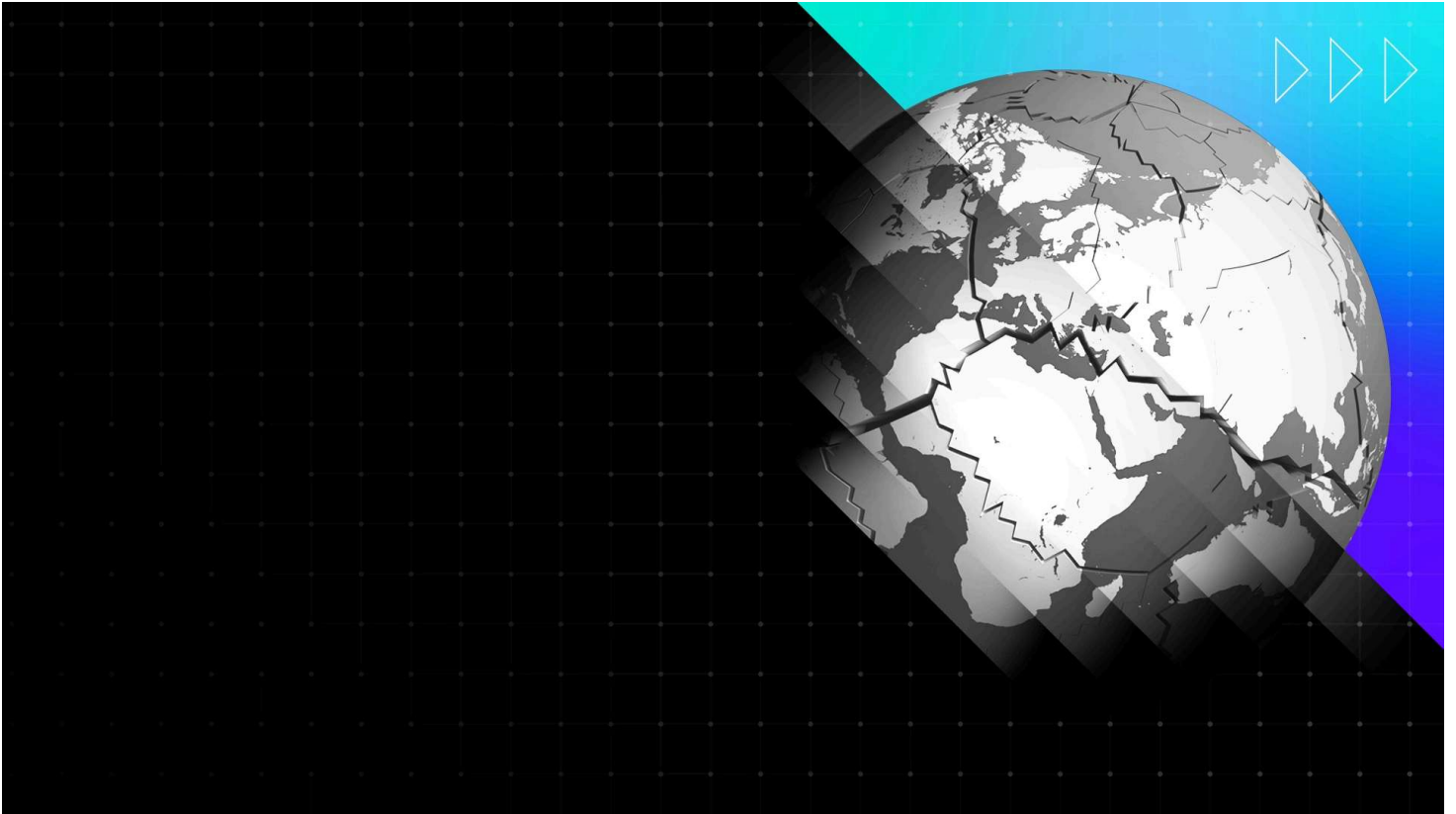




GLOBAL POLITICS

Morning Consult Political Risk Ratings

June 12, 2025



GLOBAL POLITICS

Global Political Polarization Rankings

June 18, 2025

